

# How to Connect Cricut to Computer: A Step-by-Step Guide

You have bought a new Cricut machine and are excited to [connect Cricut to computer](#). At the same time, you are bursting with ideas and don't know where to start. That overwhelming feeling is inevitable for all beginner crafters. Also, buying a new machine is like a dream come true. I remember the day when I got my first crafting machine; I had tears in my eyes.

Earlier, I used to craft using my hands only. There was no smart machine like a Cricut. But, I used simple tools such as scissors, tape, and other materials of my choice. I finally got one since I have always wanted to own a Cricut machine. So, after Cricut, what did I do?

After purchase, I started the machine setup, which also included connecting your machine to your device, like a computer or mobile device. Yes, that's what this blog is about. If you want to connect your machine to your Mac and Windows, follow me throughout this post.

## Connect Cricut to Computer (Windows)

Connecting the machine can be fun, and this process is a cakewalk. When I connected my machine to my Windows PC, it took me about 2 minutes to complete the steps. Let's see how much time you take to complete the following steps:

## Step 1: Prerequisite

Before you connect your machine to your PC, you will need to find a suitable place to lay the machine. Also, if you want to [connect Cricut to computer](#) wirelessly, you must ensure the PC and machine are closer. Do not exceed 15 feet between your machine and PC.

**Note:** *If you have a previous version of the machine, such as Cricut Explore or Explore One, make sure you are using a wireless **Cricut Bluetooth adapter**.*

## Step 2: Navigate to Device Manager

On your desktop, you have to go to **Device Manager**. In order to open Device Manager on your Windows PC, you can try any one of the following steps:

- Type the **Windows** icon and **X** keys on the keyboard and select **Device Manager**.
- Tap on the **Windows** icon, type “**Device Manager**,” and then hit **Enter**.

Once it opens, look for the **Bluetooth** option from the list. If you find the Bluetooth listed on the list, it means your PC is Bluetooth-enabled.



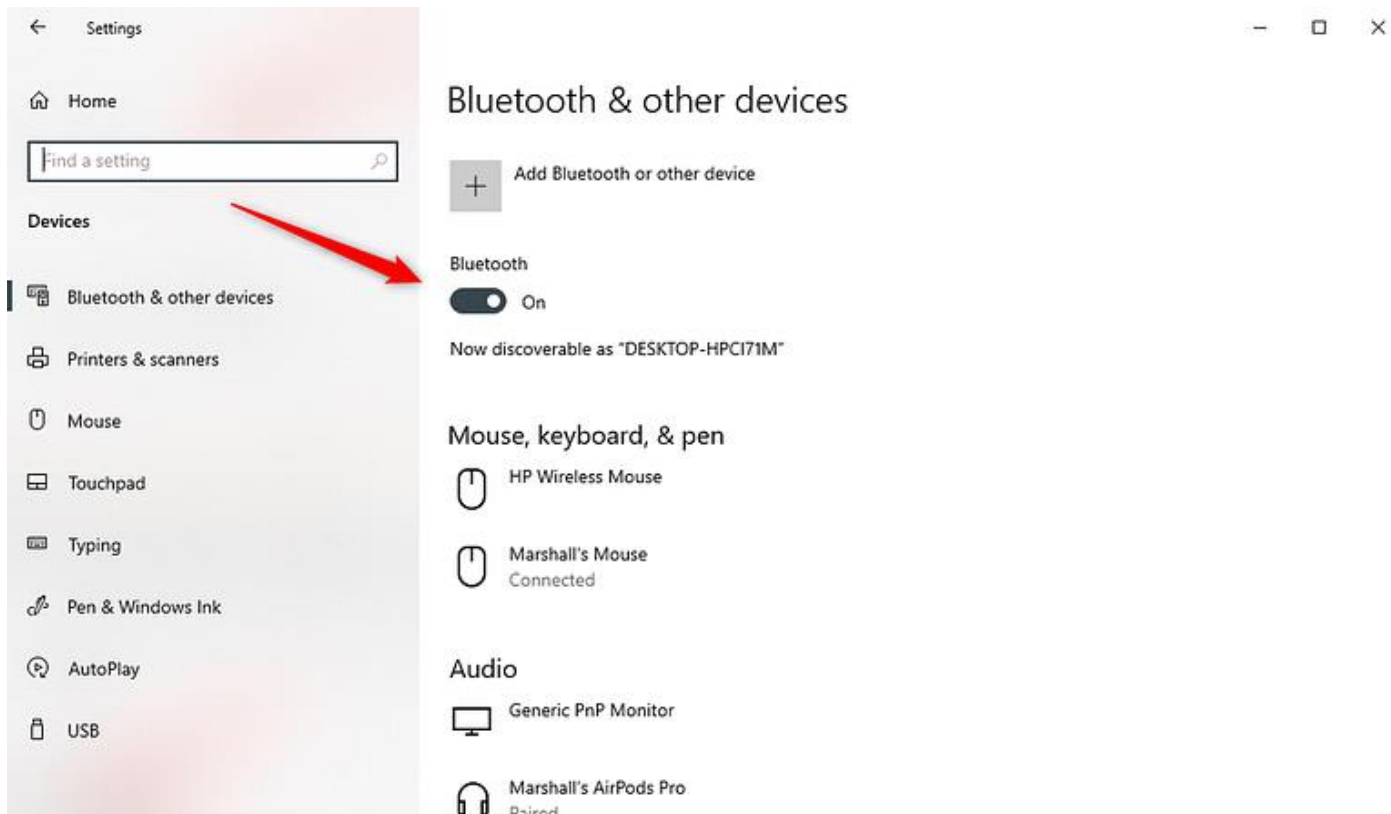
If not, you will need to buy a Bluetooth dongle to enable it. Now, exit the Device Manager.

### **Step 3: Open the Settings Panel**

On your keyboard, type **Windows icon** + **I** keys to open the Settings. After that, go to the **Devices** option.

### **Step 4: Turn On Bluetooth**

On the Devices page, you will reach the Bluetooth & other **Devices** option. On this screen, you will have to check whether your Bluetooth is turned on. If it is off, turn it on.



After that, you will have to click on **Add Bluetooth or other device** just above the Bluetooth option. On the next page, pick the **Bluetooth** option and wait until it detects your nearby devices.

## Step 5: Pairing Cricut With PC

Once your machine is visible on the screen, select your machine model and finish the pairing. It asks you to enter a digit PIN, type **0000**, and select **Connect**.

## Connect Cricut to Computer (MacBook)



Even when I switched my crafting from my PC to my Mac a few years back, my experience with Mac was superb. So, if you are a Mac user and want to connect your machine to it, follow the steps given below:

## **Step 1: Prerequisite**

As I explained above, for the Windows PC, you need to keep a distance of 10 to 15 feet between your devices. Otherwise, keep them as close as possible; it will give you better connectivity.

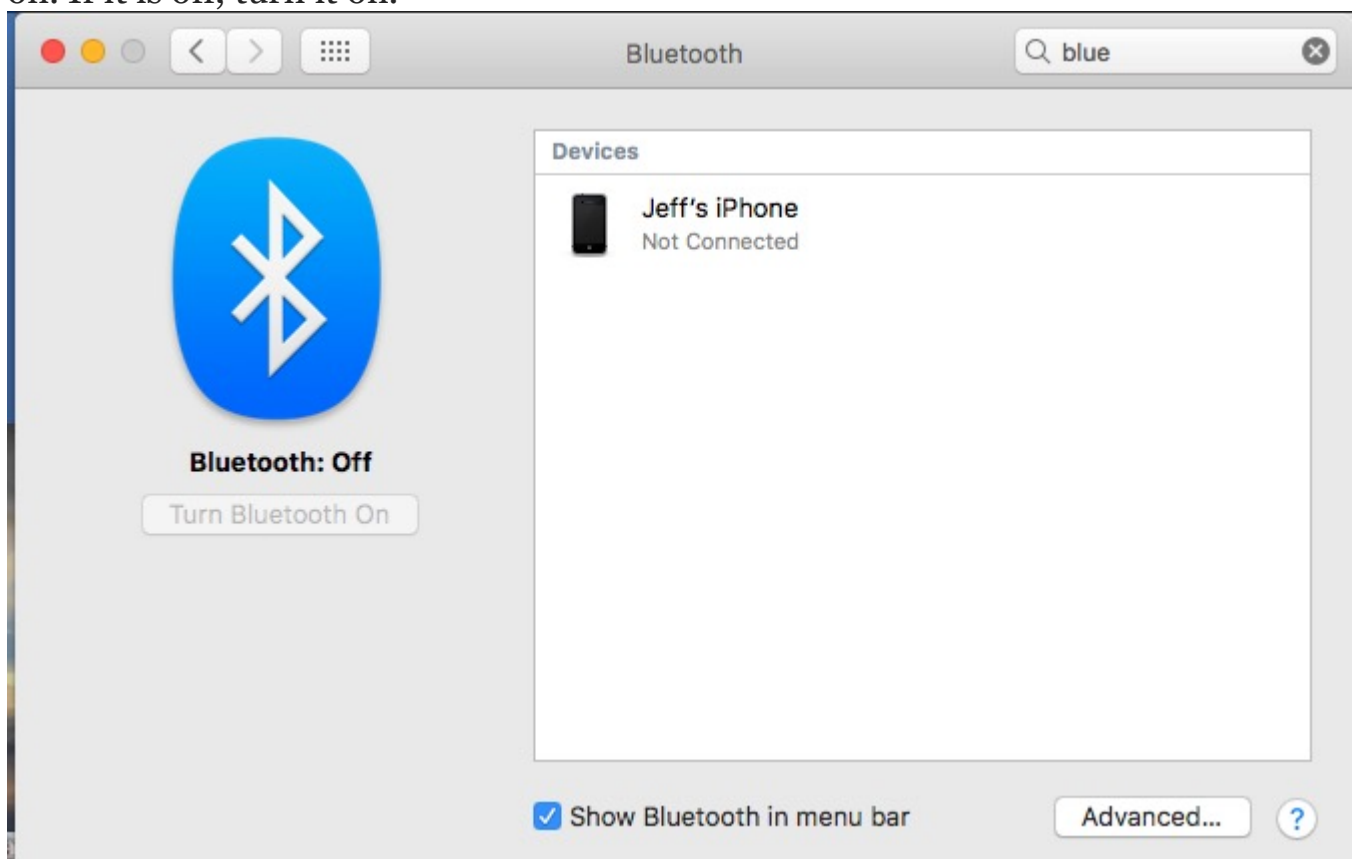
## **Step 2: Navigate to System Preferences**

Although most Mac computers have Bluetooth features enabled, you can still confirm by navigating to the **Apple menu > System Preferences** and checking for the **Bluetooth** option.



### Step 3: Turn On Bluetooth

Once you have confirmed whether your computer is Bluetooth enabled, you need to open Bluetooth from the System Preferences and check if it is on. If it is off, turn it on.



Now, you need to choose your adapter. Bluetooth module name from the available list.

## **Step 4: Pair Cricut with MacBook**

On the next screen, you will see the model of your machine. You have to select the **Pair** button on the right next to it. When asked, just type the four digits of PIN — **0000** and complete the pairing.

Finally, you have learned how to [connect Cricut to computer](#), be it a Mac or a Windows. You have learned about **Cricut connect to computer** on both of these devices. Now, enjoy your crafting on your machine without a hitch.

## **FAQs**

### **Question 1: How can I allow Bluetooth on macOS Sonoma?**

**Answer:** If you are using macOS Sonoma and are not able to pair your machine, then follow the steps given below:

1. Go to the **System Settings** by selecting the **Apple menu**.
2. Then, select **Privacy & Security**.
3. After that, you have to select **Bluetooth > Applications**.
4. On the screen, “**Allow the applications below to use Bluetooth.**” Toggle the switch for Design Space.

## **Question 2: Can I connect original Cricut to my computer?**

**Answer:** Absolutely, yes! Connecting original Cricut Explore or Explore One to a computer of your choice is possible, and it's a piece of cake. If you are connecting via a USB cord, then you can simply connect the cord to its right place. However, for a wireless connection, you need a Bluetooth-enabled computer.

## **Question 3: Which device is compatible with Cricut?**

**Answer:** All the Cricut cutting machines or heat presses are compatible with MacBook, Windows, iOS, and Android devices. However, you need to ensure you are using the newer version of devices. The latest device and OS provide smoother performance without any complexity.

Source: [connect cricut to computer](#)

Visit here to Know More:

[cricut.com/setup](https://cricut.com/setup)

[Twitter](#)